

Osceola Technical College “oTECH” Annual Security Report 2020

Geography

Office/Individual responsible	Dean of Students, LoriLaNae Cheng
Location where documentation is kept	Student Services 1A
Date information was last updated	September, 2021

oTECH maintains an up-to-date list of buildings and properties that the institution owns or controls including the addresses of those buildings. Currently, the Osceola County School District owns the main campus located at 501 Simpson Road, Kissimmee, Florida 34744. The school district also owns oTECH Poinciana located at 1030 Cypress Parkway, Kissimmee, Florida 34759. The school district leases the St. Cloud campus located at, 2901 17th. Street, St. Cloud, Florida 34769. oTECH has identified public property that is within the three campuses or immediately adjacent to and accessible to the campuses. This information is available in the placement and follow-up office of the main campus and in the assistant principal's office at the two extension campuses.

Crime Statistics

Office/Individual responsible	Dean of Students, LoriLaNae Cheng
Location where documentation is kept	Student Services 1A

oTECH has all records associated with our institution's statistics in compliance with Clery geography. Geography maps for three campuses are included in this report. oTECH discloses the statistics in the Annual Security Report and provides statistics to the department through the annual web-based data collection.

Campus Security Authorities (CSA's)

Office/Individual responsible	Principal, Assistant Principals, and Dean
Location where documentation is kept	2E, 001L, 32, 5-117, oTECHS, oTECHP admin
Date policy and procedure were last updated	September, 2021

oTECH has identified all campus security authorities. Those individuals include:
Patricia Collins – Principal, Kissimmee Main Campus, St. Cloud Campus and Poinciana Campus
Eugene French – Assistant Principal, St. Cloud Campus
Maggie Miquel – Assistant Principal, Kissimmee Main Campus
Sheryl Reyes-Cuevas – Assistant Principal, Kissimmee Main Campus
Nykowanna Sloan – Assistant Principal, Poinciana Campus
Chris Zurewich – Evening Lead Teacher, Kissimmee Main Campus
Jennifer Aviles – Evening Lead Teacher, St. Cloud Campus
Carl Martin – Evening Lead Teacher, St. Cloud Campus
LoriLaNae Cheng – Dean/Evening Lead Teacher, Kissimmee Main Campus

All CSA's are provided information they need to document reported crimes. The CSA's are provided with a map of the Clery Act geography and a list of Clery Act crimes and definitions. Crime reports are collected from local law enforcement agencies by the Dean of Students, LoriLaNae Cheng who keeps those records on file for three years.

Statistics From Local Law Enforcement Agencies

Office/Individual responsible	Dean of Students, LoriLaNae Cheng
Location where documentation is kept	Student Services 1A
Date policies and procedures were updated	September, 2021

oTECH makes a good faith effort to collect crime statistics for all three campuses from all of the law enforcement agencies with jurisdiction for our Clery geography. In the event of a non-response from a law enforcement agency oTECH will clearly document all email, phone calls, and letters sent to demonstrate that a good faith effort was made to acquire the necessary information.

Emergency Response and Evacuation Procedures

Office/Individual responsible	Dean/Assistant Principal and Extension campuses Assistant Principals office
Location where documentation is kept	001L, St. Cloud and Poinciana Campuses
Date policies and procedures were updated	September, 2021

oTECH has a written emergency evacuation and response procedure at all three campuses. The Emergency Management Plan (EMP) specifies all the procedures specific to the three campuses. oTECH also has a Health, Safety, and Security Plan in place at all three campuses. We also have the district emergency procedures guide. These documents state how the campus community will be notified in the event of a significant emergency or dangerous situation. The intercom is the primary mode of communication on the three campuses.

The process for informing the community will be to confirm a threat exists via local law enforcement alerts and on campus sweeps by the CSA's and the on-campus resource officer at the main campus. The appropriate segment or segments of the school community notified will be determined and the announcement will specify those areas. In most cases the three campuses will evacuate or lock down the entire campus in an emergency situation.

The three campuses will, without delay, and taking into account the safety of the community, determine the content of the notification and initiate the notification system, unless issuing a notification will, in the professional judgement of responsible authorities, compromise efforts to assist a victim or to contain, respond to or otherwise mitigate the emergency.

Personnel responsible for carrying out these actions are:

oTECH has identified all campus security authorities. Those individuals include:
Patricia Collins – Principal, Kissimmee Main Campus, St. Cloud Campus and Poinciana Campus
Eugene French – Assistant Principal, St. Cloud Campus
Maggie Miquel – Assistant Principal, Kissimmee Main Campus
Sheryl Reyes-Cuevas – Assistant Principal, Kissimmee Main Campus
Nykowanna Sloan – Assistant Principal, Poinciana Campus
Chris Zurewich – Evening Lead Teacher, Kissimmee Main Campus
Jennifer Aviles – Evening Lead Teacher, St. Cloud Campus
Carl Martin – Evening Lead Teacher, St. Cloud Campus
LoriLaNae Cheng – Dean/Evening Lead Teacher, Kissimmee Main Campus

The three campuses will work with the district office to initiate a call in order to disseminate emergency information to the larger community if necessary.

The three campuses test their emergency response and evacuation procedures on the following schedule:

Fire drills – Monthly
Active Assailant – Monthly
Severe weather drills – February
Emergency lock down – Monthly

All drills are announced using the on-campus intercom system. All emergency response and evacuation procedures are publicized in the Health, Safety, and Security plan that is available in every classroom and office at the three campuses. All drills are automatically recorded by District Safety and Security via our Emergency phone. All drills at the three campuses are unannounced to students.

oTECH's three campuses have communicated with local police and have their cooperation in informing the institution about situations reported to them that may warrant an emergency response.

Timely Warnings

Office/Individual responsible	Dean of Students, LoriLaNae Cheng
Location where documentation is kept	001A
Date policies and procedures were updated	September, 2021

The three oTECH campuses alert the campus community regarding any Clery Act crime that is reported and is considered to represent a serious or continuing threat to students or employees. The policy is to inform the campus community of an immediate threat via the intercom system and to staff using the email system. Ongoing threats in the Clery geography of Clery act crimes will be reported to students and staff through flyers posted on bulletin boards and posted in the entrance doorways. The three campuses will work with local law enforcement to cooperate in informing the institution about crimes reported to them that may warrant timely warnings. Kissimmee and Poinciana will work with the Osceola County Sheriff's office and the St. Cloud campus will work with the St. Cloud Police Department.

Annual Security Report

Office/Individual responsible	Dean of Students, LoriLaNae Cheng, Assistant Principal, Sheryl Reyes-Cuevas
Location where documentation is kept	001A, 001L
Date policies and procedures were updated	September, 2021

1. Current campus policies regarding procedures for students and others to report criminal actions or other emergencies occurring on campus

The three oTECH campuses publish and distribute an annual security report by October 1 to all enrolled students and employees and makes the report available to all prospective students and employees.

Policy Statements:

All students and staff at the three oTECH campuses should report criminal actions or other emergencies to the campus administration. Those administrators are:

oTECH has identified all campus security authorities. Those individuals include:

Patricia Collins – Principal, Kissimmee Main Campus, St. Cloud Campus and Poinciana Campus

Eugene French – Assistant Principal, St. Cloud Campus

Maggie Miquel – Assistant Principal, Kissimmee Main Campus

Sheryl Reyes-Cuevas – Assistant Principal, Kissimmee Main Campus

Nykwanna Sloan – Assistant Principal, Poinciana Campus

Chris Zurewich – Evening Lead Teacher, Kissimmee Main Campus

Jennifer Aviles – Evening Lead Teacher, St. Cloud Campus

Carl Martin – Evening Lead Teacher, St. Cloud Campus

LoriLaNae Cheng – Dean/Evening Lead Teacher, Kissimmee Main Campus

Policies for making timely warning reports to members of the campus community regarding the occurrence of *Clery Act* crimes

All reports of suspected activity will be taken seriously, and every effort will be made to conduct a full investigation in conjunction with local law enforcement if deemed necessary. Any acts of crime that are determined to be Clery will be reported to the members of the campus community immediately using the means described in the Timely Warning section of this document.

Policies for preparing the annual disclosure of crime statistics

Preparation of the annual disclosure of crime statistics will take place each year in August and will include submitting a request to local law enforcement for applicable Clery crimes in the campus geography. The annual disclosure for the three campuses will be prepared by the Placement and Follow-up staff member working at the main campus.

To report a crime, contact the following law enforcement agencies:

Kissimmee Main campus – Osceola County Police Department, 407-348-1100

St. Cloud campus – St. Cloud Police Department, 407-891-6700

Poinciana Campus – Osceola County Police Department, 407-348-1100

In addition, student statement forms are available from the following staff members:

Title	Campus	Phone	Email
Patricia Collins - Principal	Kissimmee Main, St. Cloud and Poinciana	407-344-5080	Patricia.Collins@osceolaschools.net
Eugene French - Assistant Principal	St. Cloud	407-343-7342	Eugene.French@osceolaschools.net
Maggie Miquel - Assistant Principal	Kissimmee Main	407-344-5080	Maggie.Miquel@osceolaschools.net
Sheryl Reyes-Cuevas - Assistant Principal	Kissimmee Main	407-344-5080	Sheryl.ReyesCuevas@osceolaschools.net
Nykwanna Sloan- Assistant Principal	Poinciana	407-343-7341	Nykwanna.Sloan @osceolaschools.net
Chris Zurewich - Evening Lead Teacher	Kissimmee Main	407-344-5080	Christopher.Zurewich@osceolaschools.net
Jennifer Aviles - Evening Lead Teacher	St. Cloud	407-343-7342	Jennifer.Aviles2@osceolaschools.net
Carl Martin - Evening Lead Teacher	St. Cloud	407-343-7342	Carl.Martin@osceolaschools.net
LoriLaNae Cheng - Evening Lead Teacher/Dean	Kissimmee Main	407-344-5080	LoriLaNae.Cheng@osceolaschools.net

Security of and access to campus facilities, including campus residences

During business hours, each campus will be open to students, parents, employees, contractors, guests, and invitees. During non-business hours, access to the campus is by key, if issued, and limited only to administrative employees who have been assigned to have access. oTECH does not have on campus housing.

Security considerations used in the maintenance of campus facilities

Security considerations at the three campuses for the maintenance of campus facilities are addressed in the oTECH written plan for Ongoing Maintenance of all Physical Facilities, Technical Infrastructure, and Distance Education. This plan describes how oTECH coordinates with district staff to evaluate the ongoing needs of the three campuses. Issues are reported promptly to the district maintenance department for repair. Additionally,

students are surveyed every semester regarding safety perceptions. The results are reviewed bi-annually and changes are made accordingly.

Campus policies concerning law enforcement including the following:

The law enforcement authority and jurisdiction of campus security personnel

The St. Cloud and Poinciana Campuses do not have an on campus law enforcement officer. The campus administrators at these schools maintain high visibility and work closely with local law enforcement to maintain security as indicated in the timely warning section of this document. The main campus in Kissimmee shares a full time Osceola County Deputy Sheriff with the Professional and Technical High School located adjacent to the campus. This officer is available during normal daytime business hours. The evening administrator works with the Osceola County Sheriff's office if needs arise.

The working relationship of campus security personnel with state and local law enforcement agencies, including whether the institution has agreements with such agencies, such as written memoranda of understanding, for the investigation of alleged criminal offenses.

The three oTECH campuses recognize the importance that laws and rules play in the safe operation of the campuses. oTECH supports the enforcement of laws by governmental agencies and the rules that govern the Osceola County School District. Law enforcement officials may enter any campus to conduct business as needed. These agencies will be notified immediately of all crimes that occur on any campus. oTECH collaborates with local law enforcement on annual campus safety assessments for all sites.

Policies that encourage accurate and prompt reporting of all crimes to the campus police and the appropriate law enforcement agencies

All persons working or visiting any of the three oTECH campuses are encouraged to report all crimes to the appropriate law enforcement agency as soon as possible. To report a crime on any campus you can dial 9-1-1, staff members may report incidents via the Fortify FL app or the RAVE Panic Button or you may dial the following numbers:

Kissimmee Main Campus – Osceola County Sheriff's Department, 407-348-1100

St. Cloud Campus – St. Cloud Police Department, 407-891-6700

Poinciana Campus – Osceola County Sheriff's Department, 407-348-1100

A description of procedures, if any, that encourage pastoral counselors and professional counselors, if and when they deem it appropriate, to inform the persons they are counseling of any procedures to report crimes on a voluntary, confidential basis for inclusion in the annual disclosure of crime statistics

oTECH's three campuses do not have confidential reporting of crimes. All crimes will be reported to local law enforcement and will be reviewed by oTECH administration to determine if school action is needed. Violations of the law will be referred to the appropriate agency and to oTECH administration for review. Timely warnings will be issued to the campus community via the intercom system, emails, and/or the automated call out system at each campus.

A description of the type and frequency of programs designed to inform students and employees about campus security procedures and practices and to encourage students and employees to be responsible for their own security and the security of others

All students are informed of the security practices of the three campuses during the new student orientation that occurs at the beginning of the year or at any time a student begins a program. During these orientations students are made aware of the Clery act and VAWA reporting that is conducted annually. The oTECH Health Safety and Security Plan is reviewed by a committee annually and changes and updates are made accordingly. The plan is

disseminated to the staff and is placed in each emergency bin located in every classroom and office at the three campuses.

Description of programs designed to inform students and employees about the prevention of crimes

oTECH does not have a program to inform students about the prevention of crime, but our staff and faculty are provided with a mental health training every year.

Policy concerning the monitoring and recording, through local police agencies, of criminal activity in which students engaged at off-campus locations of student organizations officially recognized by the institution, including student organizations with off-campus housing facilities

oTECH does not have any off-campus locations where student organizations meet.

A policy regarding the possession, use and sale of alcoholic beverages and enforcement of state underage drinking laws

oTECH has strict policies regarding the possession, use and sale of alcoholic beverages and enforcement of state underage drinking laws. Those policies are specified in the Osceola County Student Code of Conduct and are also included in the oTECH Discipline Matrix. Any student possessing, using, or selling, alcohol will be subject to dismissal and will be reported to law enforcement.

Policy regarding the possession, use and sale of illegal drugs and enforcement of federal and state drug laws

oTECH has strict policies regarding the possession, use and sale of illegal drugs. Those policies are specified in the Osceola County Student Code of Conduct and are also included in the oTECH Discipline Matrix. Any student possessing, using, or selling, illegal drugs will be subject to dismissal and will be reported to law enforcement.

A description of any drug or alcohol abuse education programs as required under Section 120(a) through (d) of the HEA.

All employees of SDOC will be referred to the Employee Assistance Program for support and intervention for drug and alcohol problems at 1-888-882-0797. SDOC does not offer drug and alcohol abuse education programs for students.

Statement that the institution will, upon written request, disclose to the alleged victim of a crime of violence (as that term is defined in Section 16 of Title 18, United States Code), or a non-forcible sex offense, the report on the results of any disciplinary proceeding conducted by such institution against a student who is the alleged perpetrator of such crime or offense If the alleged victim is deceased as a result of such crime or offense, the next of kin of such victim shall be treated as the alleged victim

oTECH will, upon written request, disclose to the alleged victim of a crime of violence (as that term is defined in Section 16 of Title 18, United States Code), or a non-forcible sex offense, the report on the results of any disciplinary proceeding conducted against a student who is the alleged perpetrator of such crime or offense. If the alleged victim is deceased as a result of such crime or offense, the next of kin of such victim shall be treated as the alleged victim.

Statement regarding the institution's emergency response and evacuation procedures

The three oTECH campuses perform emergency fire drills, severe weather lock downs, and active shooter lock downs. These drills are announced using the school intercom system and administration sweep the building to ensure that the drill is in compliance. The drill is automatically reported via our emergency phones.

All three oTECH locations participate in monthly emergency evacuations and response drills. Each drill is reported to the Health and Safety Department at the district office via the appropriate drill form. The emergency evacuation, severe weather, and lock down schedule is as follows:

- August – Two fire drills
- September – One Fire Drill and One Emergency Lock Down Drill
- October – One Fire Drill and One Emergency Lock Down Drill
- November – One Fire Drill and One Emergency Lock Down Drill
- December – One Fire Drill and One Emergency Lock Down Drill
- January – One Fire Drill and One Emergency Lock Down Drill
- February – One Fire Drill and One Emergency Lock Down Drill and One Severe Weather Drill
- March – One Fire Drill and One Emergency Lock Down Drill
- April – One Fire Drill and One Emergency Lock Down Drill
- May – One Fire Drill and One Emergency Lock Down Drill

These drills are effectively performed with staff assigned to campus zones to oversee that all protocols are conformed to. Any discrepancies in the performance of the drill is reported to the administrator and reviewed by the safety committee for correction.

Statement regarding the notification of missing student procedures

Institution's programs to prevent dating violence, domestic violence, sexual assault and stalking

oTECH is committed to providing and maintaining a healthy learning and working environment for all students, staff and faculty members. It is important that all students are aware of and protect their rights in the school community. oTECH will not tolerate assault and/or intimidating behavior of any kind including but not limited to domestic violence, dating violence, sexual assault, and stalking. Violators are subject to withdrawal from school and being reported to law enforcement. oTECH's three campuses prohibit the crimes of dating violence, domestic violence, and sexual assault.

In order to reduce the risk of in these areas students are encouraged to not loiter in parking lots and to ask for a staff member to provide an escort after sundown. Students are also encouraged to remain in groups if at all possible. All students, regardless of age, are kept to supervised locations while on campus.

Description of educational programs and campaigns to promote the awareness of dating violence, domestic violence, sexual assault and stalking

Currently no programs or campaigns to promote the awareness of dating violence, domestic violence, sexual assault and stalking are available through the Osceola County School District.

Procedures to Follow if Sexual Offense Occurs:

- The victim should get to safety.
- The victim should get immediate medical assistance.
- The victim should report the incident in a timely manner to any school official or directly to the Kissimmee Police Department 407-847-2821/Osceola County Sheriff's Department 407-348-1100/St. Cloud Police Department 407-891-6700. Victims that report incidents to school officials will receive assistance in notifying the proper authorities. The victim has the right to decline the notification of authorities if they are a legal adult.
- Evidence should not be destroyed. The victim should refrain from taking a shower, washing hands, or changing clothing. The location where the assault occurred should not be disturbed.
- By standers should remain with the victim until emergency services are on the scene if it is safe to do so.
- The victim is encouraged to seek counseling.
 - On-Campus Counseling: Limited counseling available
 - Off-Campus Counseling: Help Now of Osceola County, Hotline # 407-847-8562

Domestic Violence: includes felony or misdemeanor crimes of violence committed by—
(A) a current or former spouse or intimate partner of the victim,

- (B) a person with whom the victim shares a child in common,
- (C) a person who is cohabitating with or has cohabitated with the victim as a spouse or intimate partner,
- (D) a person similarly situated to a spouse of the victim under the domestic or family violence laws of the jurisdiction receiving grant monies, or
- (E) Any other person against an adult or youth victim who is protected from that person's acts under the domestic or family violence laws of the jurisdiction.

Dating Violence: means violence committed by a person—

- (A) who is or has been in a social relationship of a romantic or intimate nature with the victim; and
- (B) where the existence of such a relationship shall be determined based on a consideration of the following factors:
 - (i) The length of the relationship;
 - (ii) The type of relationship; and
 - (iii) The frequency of interaction between the persons involved in the relationship.

Sexual Assault: means an offense classified as a forcible or no forcible sex offense under the uniform crime reporting system of the Federal Bureau of Investigation.

Stalking: means engaging in a course of conduct directed at a specific person that would cause a reasonable person to—

- (A) fear for his or her safety or the safety of others; or
- (B) Suffer substantial emotional distress.

“Consent” means intelligent, knowing, and voluntary consent and does not include coerced submission.

“Consent” shall not be deemed or construed to mean the failure by the alleged victim to offer physical resistance to the offender. Florida statute 794.011a

All no contact orders such as restraining orders or similar lawful orders issued by criminal, civil or tribunal courts, are in full effect while students are on any of the three campuses. Any violation of such orders will be reported to law enforcement immediately.

Institutions of higher education are required to issue a statement advising the campus community where law enforcement information provided by the State concerning registered sex offenders may be obtained. This information may be obtained at the FLDLE Florida Sexual Offenders and Predators website at <http://offender.fdle.state.fl.us/offender/homepage.do>.

Procedures the three oTECH campuses will follow to protect the confidentiality of victims and other necessary parties

oTECH reports all crimes including Clery Act reporting disclosures without inclusion of personally identifying information about the victim. oTECH further will maintain as confidential any accommodations or protective measures provided to the victim to the extent that maintaining such confidentiality would not impair the ability of the institution to provide the accommodation or protective measures.

The school will provide written notification to students and employees about existing counseling, health, mental health, victim advocacy, legal assistance, visa and immigration assistance, student financial aid and other services available for victims, both within the institution and in the community if such services are available.

oTECH will provide academic changes of schedule to any student who has been the victim of a crime whether the student chooses to report the crime to local law enforcement.

Statement of policy that addresses the procedures for institution disciplinary action in cases of alleged dating violence, domestic violence, sexual assault or stalking.

All students, including the accuser and the accused are provided Due Process for any allegations of wrongdoing. Due process affords both parties the opportunity to make official written statements regarding the allegation and to provide witnesses. School administration must ensure that due process is followed by thoroughly investigating any allegation and interviewing all parties involved and all witnesses presented. All parties will be allowed to present relevant evidence. All such proceedings will be prompt, fair, and impartial from the initial investigation to the final. oTECH will not limit the choice of advisor or presence of for either the accuser or the accused in the meeting or institutional disciplinary proceeding as long as the advisor has completed the Consent for Release of Personal Information (CRPI) form. All investigations will be conducted by at least two oTECH staff members who are administrators and who are equipped to conduct such an investigation. District level staff may be called in to provide support if needed. If a disciplinary proceeding is to occur following an investigation, the accuser and the accused have the right to have others present with them during the proceeding as long as they have completed the CRPI form.

Both the accuser and the accused will be informed promptly of the outcome of any institutional disciplinary proceeding that pertains to a sex offense. Possible sanctions include dismissal from the school.

Protective measures will be made available to the victim and may include being escorted between classes and to and from the parking lot if requested.

Simultaneous notification, in writing, to both the accuser and the accused:

Both the accuser and the accused will be informed promptly in writing of the outcome of any institutional disciplinary proceeding that pertains to a sex offense. Possible sanctions include dismissal from the school. Both parties will have the right to appeal the outcome to the principal at the main campus who will assemble a committee to review the request. Any change as a result of the appeal will be communicated in writing promptly. If the party making the appeal is not satisfied with the outcome he/she may appeal to the Executive Director of Career and Technical Education at the Osceola County District office. If the party is not satisfied with the outcome they may appeal to the Council on Occupational Education (COE) located at 7840 Roswell Road, Building 300, suite 325 Atlanta, GA. 30350. COE is the final appeal level.

When a student or employee reports to the institution that the student or employee has been a victim of dating violence, domestic violence, sexual assault, or stalking, whether the offense occurred on or off campus, the institution will provide the student or employs a written explanation of the student's or employee's rights and options.

Report to the Department via Web-based Data Collection

Office/Individual responsible	Dean of Students, LoriLaNae Cheng
Location where documentation is kept	001A
Date policies and procedures were updated	September, 2021

oTECH submits the crime statistics for the annual security report to the department via the annual web-based data collection for all three campuses.

CRIME STATISTICS AND ARRESTS KISSIMMEE CAMPUS

ON-CAMPUS STATISTICS

Criminal Offenses	2018	2019	2020
a. Murder/Non-negligent manslaughter	0	0	0
b. Negligent manslaughter	0	0	0
c. Sex Offenses - Forcible	0	0	0
d. Sex Offenses - Non Forcible	0	0	0
e. Robbery	0	0	0
f. Aggravated assault	0	0	0
g. Burglary	0	0	0
h. Motor Vehicle theft	0	0	0
i. Arson	0	0	0
Hate Crimes: Crimes motivated by prejudice based on race gender/religion/sexual orientation/ethnicity/disability	2018	2019	2020
a. Murder/Non-negligent manslaughter	0	0	0
b. Negligent manslaughter	0	0	0
c. Sex Offenses - Forcible	0	0	0
d. Sex Offenses - Non Forcible	0	0	0
e. Robbery	0	0	0
f. Aggravated assault	0	0	0
g. Burglary	0	0	0
h. Motor vehicle theft	0	0	0
i. Arson	0	0	0
j. Simple assault	0	0	0
k. Larceny-theft	0	0	0
l. Intimidation	0	0	0
m. Destruction/damage/vandalism of property	0	0	0
Arrests	2018	2019	2020
a. Weapons: carrying, possessing, etc.	0	0	0
b. Drug abuse violations	0	0	0
c. Liquor law Violations	0	0	0
Discipline Actions	2018	2019	2020
a. Weapons: carrying, possessing, etc.	0	0	0
b. Drug abuse violations	0	0	0
c. Liquor law Violations	0	2	0
Sexual Violence	2018	2019	2020
a. Sexual Assault	0	0	0
b. Domestic Violence	0	0	0
c. Dating Violence	0	0	0
d. Stalking	0	0	0

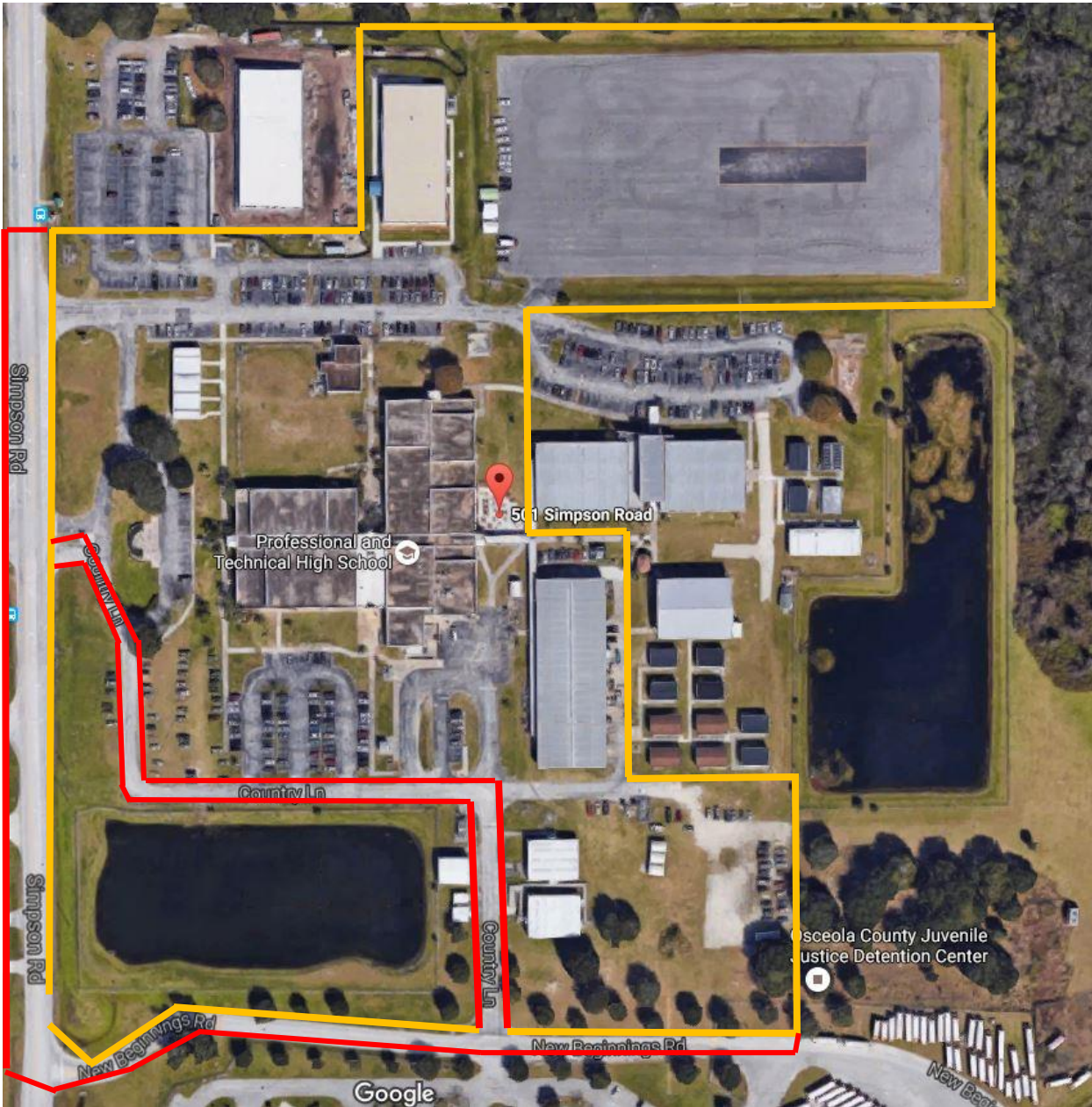
PUBLIC PROPERTY STATISTICS

Criminal Offenses	2018	2019	2020
a. Murder/Non-negligent manslaughter	0	0	0
b. Negligent manslaughter	0	0	0
c. Sex Offenses - Forcible	0	0	0
d. Sex Offenses - Non Forcible	0	0	0
e. Robbery	0	0	0
f. Aggravated assault	0	0	0
g. Burglary	0	0	0
h. Motor Vehicle theft	0	0	0
i. Arson	0	0	0
Hate Crimes: Crimes motivated by prejudice based on race gender/religion/sexual orientation/ethnicity/disability	2018	2019	2020
a. Murder/Non-negligent manslaughter	0	0	0
b. Negligent manslaughter	0	0	0
c. Sex Offenses - Forcible	0	0	0
d. Sex Offenses - Non Forcible	0	0	0
e. Robbery	0	0	0
f. Aggravated assault	0	0	0
g. Burglary	0	0	0
h. Motor vehicle theft	0	0	0
i. Arson	0	0	0
j. Simple assault	0	0	0
k. Larceny-theft	0	0	0
l. Intimidation	0	0	0
m. Destruction/damage/vandalism of property	0	0	0
Arrests	2018	2019	2020
a. Weapons: carrying, possessing, etc.	0	0	0
b. Drug abuse violations	1	0	0
c. Liquor law Violations	0	0	0
Discipline Actions	2018	2019	2020
a. Weapons: carrying, possessing, etc.	0	0	0
b. Drug abuse violations	0	0	0
c. Liquor law Violations	0	0	0
Sexual Violence	2018	2019	2020
a. Sexual Assault	0	0	0
b. Domestic Violence	0	0	0
c. Dating Violence	0	0	0
d. Stalking	0	0	0

CLERY GEOGRAPHY KISSIMMEE CAMPUS

Osceola Technical College - Kissimmee
501 Simpson Road
Kissimmee, FL 34744

- On-Campus Geography
- Public Property Geography



CRIME STATISTICS AND ARRESTS ST. CLOUD CAMPUS

ON-CAMPUS STATISTICS

Criminal Offenses	2018	2019	2020
a. Murder/Non-negligent manslaughter	0	0	0
b. Negligent manslaughter	0	0	0
c. Sex Offenses - Forcible	0	0	0
d. Sex Offenses - Non Forcible	0	0	0
e. Robbery	0	0	0
f. Aggravated assault	0	0	0
g. Burglary	0	0	0
h. Motor Vehicle theft	0	0	0
i. Arson	0	0	0
Hate Crimes: Crimes motivated by prejudice based on race gender/religion/sexual orientation/ethnicity/disability	2018	2019	2020
a. Murder/Non-negligent manslaughter	0	0	0
b. Negligent manslaughter	0	0	0
c. Sex Offenses - Forcible	0	0	0
d. Sex Offenses - Non Forcible	0	0	0
e. Robbery	0	0	0
f. Aggravated assault	0	0	0
g. Burglary	0	0	0
h. Motor vehicle theft	0	0	0
i. Arson	0	0	0
j. Simple assault	0	0	0
k. Larceny-theft	0	0	0
l. Intimidation	0	0	0
m. Destruction/damage/vandalism of property	0	0	0
Arrests	2018	2019	2020
a. Weapons: carrying, possessing, etc.	0	0	0
b. Drug abuse violations	0	0	0
c. Liquor law Violations	0	0	0
Discipline Actions	2018	2019	2020
a. Weapons: carrying, possessing, etc.	1	0	0
b. Drug abuse violations	0	0	0
c. Liquor law Violations	0	0	0
Sexual Violence	2018	2019	2020
a. Sexual Assault	0	0	0
b. Domestic Violence	0	0	0
c. Dating Violence	0	0	0
d. Stalking	0	0	0

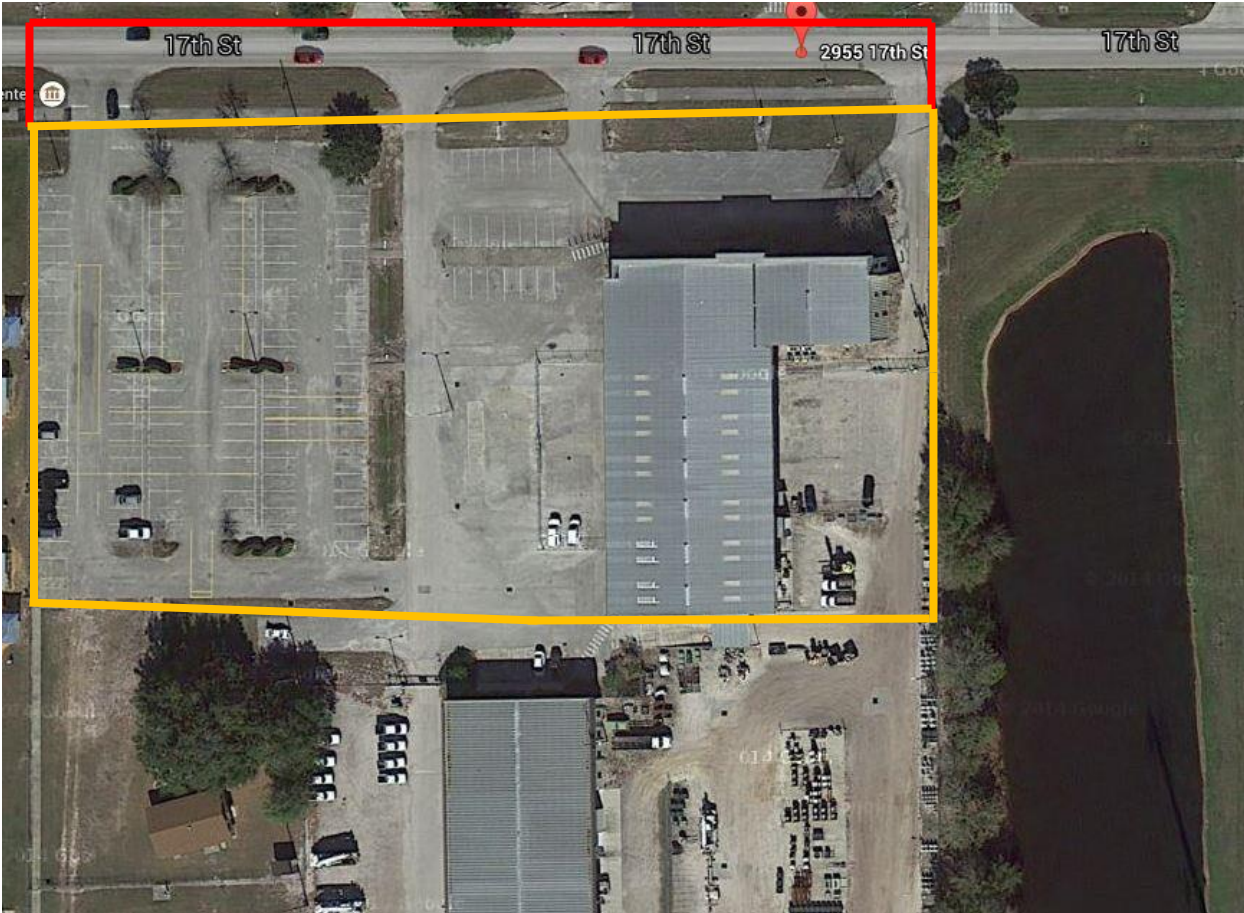
PUBLIC PROPERTY STATISTICS

Criminal Offenses	2018	2019	2020
a. Murder/Non-negligent manslaughter	0	0	0
b. Negligent manslaughter	0	0	0
c. Sex Offenses - Forcible	0	0	0
d. Sex Offenses - Non Forcible	0	0	0
e. Robbery	0	0	0
f. Aggravated assault	0	0	0
g. Burglary	0	0	0
h. Motor Vehicle theft	0	0	0
i. Arson	0	0	0
Hate Crimes: Crimes motivated by prejudice based on race gender/religion/sexual orientation/ethnicity/disability	2018	2019	2020
a. Murder/Non-negligent manslaughter	0	0	0
b. Negligent manslaughter	0	0	0
c. Sex Offenses - Forcible	0	0	0
d. Sex Offenses - Non Forcible	0	0	0
e. Robbery	0	0	0
f. Aggravated assault	0	0	0
g. Burglary	0	0	0
h. Motor vehicle theft	0	0	0
i. Arson	0	0	0
j. Simple assault	0	0	0
k. Larceny-theft	0	0	0
l. Intimidation	0	0	0
m. Destruction/damage/vandalism of property	0	0	0
Arrests	2018	2019	2020
a. Weapons: carrying, possessing, etc.	0	0	0
b. Drug abuse violations	0	0	0
c. Liquor law Violations	0	0	0
Discipline Actions	2018	2019	2020
a. Weapons: carrying, possessing, etc.	0	0	0
b. Drug abuse violations	0	0	0
c. Liquor law Violations	0	0	0
Sexual Violence	2018	2019	2020
a. Sexual Assault	0	0	0
b. Domestic Violence	0	0	0
c. Dating Violence	0	0	0
d. Stalking	0	0	0

CLERY GEOGRAPHY ST. CLOUD CAMPUS

Osceola Technical College - St. Cloud
2901 17th Street
St. Cloud, FL 34769

- On-Campus Geography
- Public Property Geography



CRIME STATISTICS AND ARRESTS POINCIANA CAMPUS

ON-CAMPUS STATISTICS

Criminal Offenses	2018	2019	2020
a. Murder/Non-negligent manslaughter	0	0	0
b. Negligent manslaughter	0	0	0
c. Sex Offenses - Forcible	0	0	0
d. Sex Offenses - Non Forcible	0	0	0
e. Robbery	0	0	0
f. Aggravated assault	0	0	0
g. Burglary	0	0	0
h. Motor Vehicle theft	0	0	0
i. Arson	0	0	0
Hate Crimes: Crimes motivated by prejudice based on race gender/religion/sexual orientation/ethnicity/disability	2018	2019	2020
a. Murder/Non-negligent manslaughter	0	0	0
b. Negligent manslaughter	0	0	0
c. Sex Offenses - Forcible	0	0	0
d. Sex Offenses - Non Forcible	0	0	0
e. Robbery	0	0	0
f. Aggravated assault	0	0	0
g. Burglary	0	0	0
h. Motor vehicle theft	0	0	0
i. Arson	0	0	0
j. Simple assault	0	0	0
k. Larceny-theft	0	0	0
l. Intimidation	0	0	0
m. Destruction/damage/vandalism of property	0	0	0
Arrests	2018	2019	2020
a. Weapons: carrying, possessing, etc.	0	0	0
b. Drug abuse violations	0	0	0
c. Liquor law Violations	0	0	0
Discipline Actions	2018	2019	2020
a. Weapons: carrying, possessing, etc.	0	0	0
b. Drug abuse violations	0	0	0
c. Liquor law Violations	0	0	0
Sexual Violence	2018	2019	2020
a. Sexual Assault	0	0	0
b. Domestic Violence	0	0	0
c. Dating Violence	0	0	0
d. Stalking	0	0	0

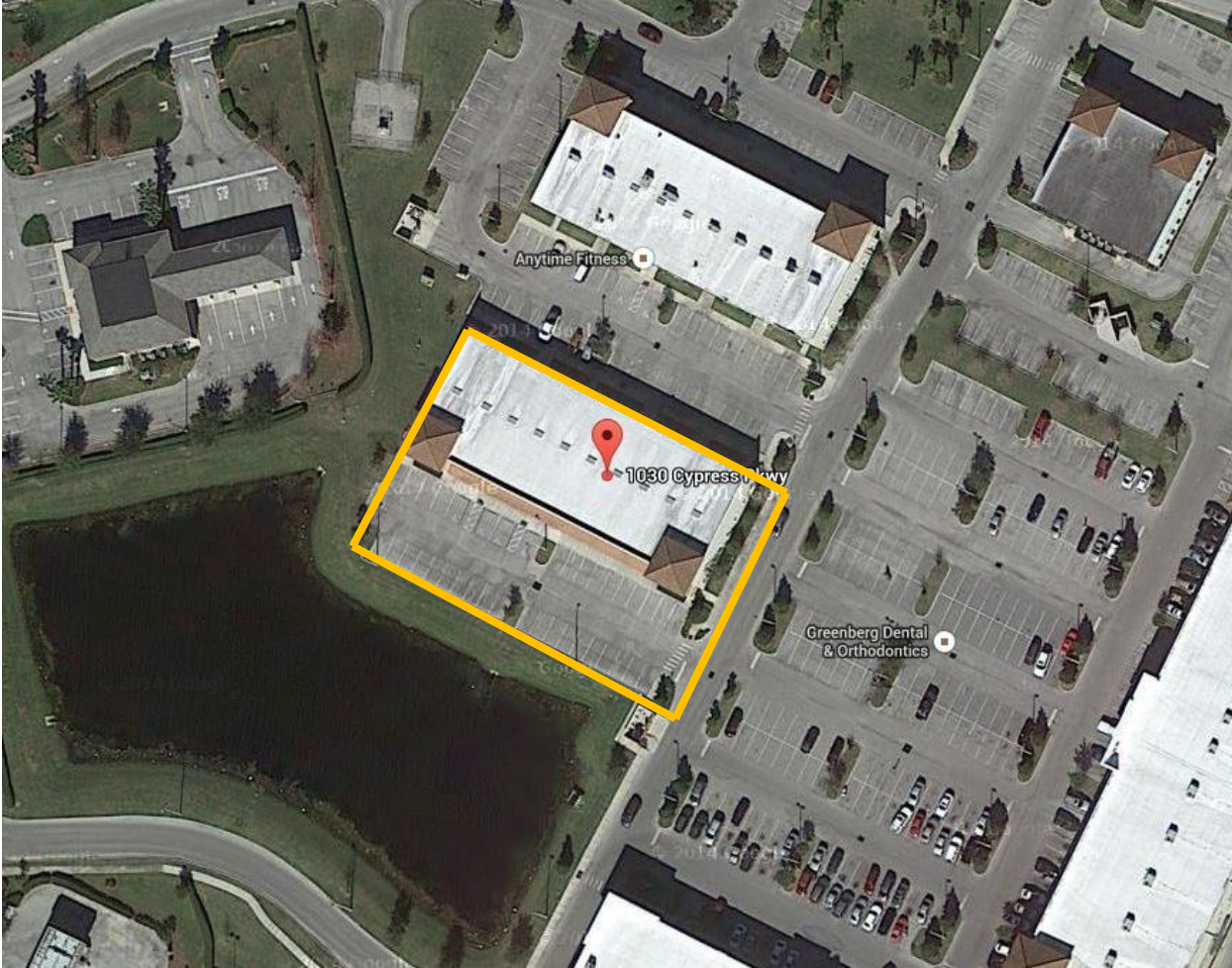
PUBLIC PROPERTY STATISTICS

Criminal Offenses	2018	2019	2020
a. Murder/Non-negligent manslaughter	0	0	0
b. Negligent manslaughter	0	0	0
c. Sex Offenses - Forcible	0	0	0
d. Sex Offenses - Non Forcible	0	0	0
e. Robbery	0	0	0
f. Aggravated assault	0	0	0
g. Burglary	0	0	0
h. Motor Vehicle theft	0	0	0
i. Arson	0	0	0
Hate Crimes: Crimes motivated by prejudice based on race gender/religion/sexual orientation/ethnicity/disability	2018	2019	2020
a. Murder/Non-negligent manslaughter	0	0	0
b. Negligent manslaughter	0	0	0
c. Sex Offenses - Forcible	0	0	0
d. Sex Offenses - Non Forcible	0	0	0
e. Robbery	0	0	0
f. Aggravated assault	0	0	0
g. Burglary	0	0	0
h. Motor vehicle theft	0	0	0
i. Arson	0	0	0
j. Simple assault	0	0	0
k. Larceny-theft	0	0	0
l. Intimidation	0	0	0
m. Destruction/damage/vandalism of property	0	0	0
Arrests	2018	2019	2020
a. Weapons: carrying, possessing, etc.	0	0	0
b. Drug abuse violations	0	0	0
c. Liquor law Violations	0	0	0
Discipline Actions	2018	2019	2020
a. Weapons: carrying, possessing, etc.	0	0	0
b. Drug abuse violations	0	0	0
c. Liquor law Violations	0	0	0
Sexual Violence	2018	2019	2020
a. Sexual Assault	0	0	0
b. Domestic Violence	0	0	0
c. Dating Violence	0	0	0
d. Stalking	0	0	0

CLERY GEOGRAPHY POINCIANA CAMPUS

Osceola Technical College - Poinciana
1030 Cypress Parkway
Poinciana, FL 34759

- On-Campus Geography
- No Public Property Geography (private property surrounds campus)



- Screening Questions
- Screening Questions
- Criminal Offenses
- Hate Crimes
- VAWA Offenses
- Arrests
- Disciplinary Actions
- Unfounded Crimes

error message

- fatal error
- confirm or explain
- resolved explanation
- overridden by admin

Screening Questions

[screen instructions](#)

Please answer these questions carefully. The answers you provide will determine which screens you will be asked to complete for this data collection.

1. Does your institution provide On-campus Student Housing Facilities?

- No.
- Yes. (If Yes is selected, you must enter the number of student housing facilities below and enter Fire Statistics for each facility.)

Number of On-campus Student Housing Facilities:

2. Does your institution have any noncampus buildings or properties?

- Yes
- No

3. Have you combined statistics that you received from the local or state police with your institution statistics for this report? If you answer No to this question, you will be asked to provide the data you received from the local and state police separately.

- Yes. Local and/or state law enforcement agencies provided us with statistics that we are combining with statistics collected by our campus security authorities.
- No. We are not combining the statistics because we cannot determine whether the statistics we obtained from local and/or state law enforcement agencies are for on-campus incidents or public property incidents.
- Not available. We cannot determine if the statistics we obtained from local and/or state law enforcement agencies are for our Clery geography.
- Not available. We made a good-faith effort to obtain statistics from local and/or state law enforcement agencies, but the agencies did not comply with our request.

- Screening Questions
- Screening Questions
- Criminal Offenses
- Hate Crimes
- VAWA Offenses
- Arrests
- Disciplinary Actions
- Unfounded Crimes

error message

- fatal error
- confirm or explain
- resolved explanation
- overridden by admin

Screening Questions

[screen instructions](#)

Please answer these questions carefully. The answers you provide will determine which screens you will be asked to complete for this data collection.

1. Does your institution provide On-campus Student Housing Facilities?

- No.
- Yes. (If Yes is selected, you must enter the number of student housing facilities below and enter Fire Statistics for each facility.)

Number of On-campus Student Housing Facilities:

2. Does your institution have any noncampus buildings or properties?

- Yes
- No

3. Have you combined statistics that you received from the local or state police with your institution statistics for this report? If you answer No to this question, you will be asked to provide the data you received from the local and state police separately.

- Yes. Local and/or state law enforcement agencies provided us with statistics that we are combining with statistics collected by our campus security authorities.
- No. We are not combining the statistics because we cannot determine whether the statistics we obtained from local and/or state law enforcement agencies are for on-campus incidents or public property incidents.
- Not available. We cannot determine if the statistics we obtained from local and/or state law enforcement agencies are for our Clery geography.
- Not available. We made a good-faith effort to obtain statistics from local and/or state law enforcement agencies, but the agencies did not comply with our request.

- Screening Questions
- Screening Questions
- Criminal Offenses
- Hate Crimes
- VAWA Offenses
- Arrests
- Disciplinary Actions
- Unfounded Crimes

error message

- fatal error
- confirm or explain
- resolved explanation
- overridden by admin

Screening Questions

[screen instructions](#)

Please answer these questions carefully. The answers you provide will determine which screens you will be asked to complete for this data collection.

1. Does your institution provide On-campus Student Housing Facilities?

- No.
- Yes. (If Yes is selected, you must enter the number of student housing facilities below and enter Fire Statistics for each facility.)

Number of On-campus Student Housing Facilities:

2. Does your institution have any noncampus buildings or properties?

- Yes
- No

3. Have you combined statistics that you received from the local or state police with your institution statistics for this report? If you answer No to this question, you will be asked to provide the data you received from the local and state police separately.

- Yes. Local and/or state law enforcement agencies provided us with statistics that we are combining with statistics collected by our campus security authorities.
- No. We are not combining the statistics because we cannot determine whether the statistics we obtained from local and/or state law enforcement agencies are for on-campus incidents or public property incidents.
- Not available. We cannot determine if the statistics we obtained from local and/or state law enforcement agencies are for our Clery geography.
- Not available. We made a good-faith effort to obtain statistics from local and/or state law enforcement agencies, but the agencies did not comply with our request.

Campus Safety and Security Survey Completion Certificate

The Campus Safety and Security data for
Osceola Technical College
(427991)
were completed and locked on **September 14, 2021**.

<u>Campus Name (ID)</u>	<u>Date of Completion</u>
Kissimmee Campus (427991001)	September 14, 2021
Technical Education Center-Osceola St. Cloud (427991002)	September 14, 2021
Technical Education Center-Osceola Poinciana (427991003)	September 14, 2021

Thank you for your participation in the data collection.
This certificate was prepared on **September 15, 2021**